

# Chief Leschi Schools

## Career and Technical Education

**CONNECTING**  
**classroom** to  
**culture** and  
**career**



siʔab læšxay' x̌alalʔtxʷ  
**Chief Leschi Schools**

*Preparing our students to walk  
successfully in "Two Worlds"*





# Contents



5

**Hospitality:  
Culinary Arts  
Pathway**



7

**Science & Engineering:  
Natural Resources  
Pathway**



9

**Education:  
Careers Pathway**



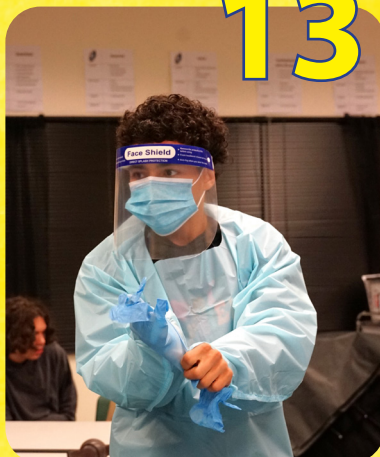


11



**Audio & Visual:  
Technology  
Pathway**

13



**Health Sciences:  
Medical Careers  
Pathway**

15



**Career  
Development  
Initiatives by the  
Puyallup Tribe**



# Where can **Career and Technical Education** take **YOU?**

Career & Technical Education, also known as CTE, is a collection of courses that lead to careers within Puyallup tribal enterprises in the community by providing students with the technical and occupational knowledge needed to be successful. The courses are often project-based with outcomes aligned to skills needed for the workplace. Our courses are directly connected to pathways found within the Puyallup tribal community, and connections are made with tribal leaders for students to see the content applied in experiences outside the classroom. Graduates of CTE programs are prepared for high-wage, high-skill, and high-demand careers.

Career & Technical Education programs provide many benefits, here are just a few:

- Connect classroom instruction with applied knowledge and skills to solve real world problems
- Build important skills in creativity, collaboration, and communication
- Develop partnerships within our tribal community for students to have a clear pathway to tribal industries post high school
- Prepare students to be career ready
- Teach students life skills that help them become productive citizens, ultimately ensuring the long-term health and economic competitiveness of our nation

Beginning in the fall of 2021, juniors and seniors were able to complete an internship course that connects to all five of our pathways. During the first semester, students learn and practice employment skills like resume writing, interviewing for jobs, and composing professional emails. They also explore available internships, select several of interest, and apply. Second semester they will complete the internship under the supervision of their teacher and professionals from their chosen enterprise. The opportunity to preview a potential career helps students develop skills and provides direction for further education.

With the passage of HB 1599, students must have a High School and Beyond Plan, earn 24 high school credits, and complete one of several different CTE pathway requirements to graduate. At Chief Leschi, we offer courses for students to take that lead to the CTE pathway requirement through:

- Hospitality: Culinary Arts Pathway
- Science and Engineering: Natural Resources Pathway
- Education Careers Pathway
- Audio & Visual Technology Pathway
- Health Sciences: Medical Careers Pathway



Natural resource students at Lake Leschi.



# CAREER PATHWAYS

## **Hospitality: Culinary Arts Pathway**

- Chief Leschi Schools Food Services
- Emerald Queen Casino, Hotel, Restaurants, & Food Service

## **Science & Engineering: Natural Resources Pathway**

- Chief Leschi Schools
- Land Use Office
- Hunting & Wildlife Department
- Fisheries Department
- Shellfish Department

## **Education: Careers Pathway**

- Chief Leschi Schools
- Grandview Early Learning
- PTHA
- Youth Center
- Puyallup Tribe of Indians Child Welfare Program
- Community & Family Services

## **Health Sciences: Medical Careers Pathway**

- Chief Leschi Schools
- PTHA
- Children's Services
- Salish Cancer Center
- Elder Services Wellness Center

## **Audio & Visual: Technology Pathway**

- Chief Leschi Schools
- Emerald Queen Casino Entertainment
- Puyallup Tribal Communications





# Hospitality: Culinary Arts Pathway

Culinary Arts Pathway is a great fit for students who want to learn how to cook, understand management, or want to own their own restaurant. This pathway will help develop the skills needed to prepare a restaurant menu, provide excellent customer service and work as a chef.

The Hospitality Culinary Pathway can lead you to:

- Learn professional cooking and baking techniques
- Practice purchasing and managing inventory
- Master basic kitchen and hotel management

## Puyallup Tribe Career Opportunities

- Chief Leschi Schools Food & Nutritional Services
- Emerald Queen Casino & Hotel
- Tatoosh Grill
- Paradise Deli
- International Restaurant
- Asian Garden
- Palace Deli
- Catering Services
- Summit Sports Bar
- Coffee Bars
- Additional eateries coming soon

## Post-High Education

- Certified Culinarians
- Associates of Applied Science Culinary Arts
- Restaurant Production Certificate
- Bachelors in Hospitality Management
- Associates in Baking & Pastry
- Associate in Culinary Arts Sous Chef

Most programs in Culinary Arts are 9 months to two years to obtain certifications and/or an associates degree.



Culinary students learning cooking techniques in the newly installed commercial culinary kitchen.



# COURSES OFFERED AT CHIEF LESCHI SCHOOLS

Hospitality: Culinary Arts Pathway					
CLUSTER	COURSE NAME	9th	10th	11th	12th
CULINARY ARTS	Culinary 1: Indigenous Culinary	●	●	●	●
	Culinary 2/3	●	●	●	●
	Food Service Management		●	●	●
	Culinary Internship			●	●

## Hospitality: Culinary Arts Pathway Advisory Board

### Name

### Position

Joshua Turnipseed  
Trent Jorgensen  
Andrea Goodale  
Carl Lorton  
Cherilyn Williams

Head Chef, BJ's Restaurant  
Owner of the Frying Dutchman  
Food Service Manager, Chief Leschi Schools  
Indigenous Culinary CTE teacher  
Culinary CTE teacher

*ck'aqid čet dx<sup>w</sup>huyale ʔə tɪl swatx<sup>w</sup>ix<sup>w</sup>tx<sup>w</sup>ed yex<sup>w</sup> tɪl  
st'ek<sup>w</sup>ab yex<sup>w</sup> tɪl sʰaɪ'ɪdup yex<sup>w</sup> tɪl q<sup>w</sup>uʔ dɛx<sup>w</sup>uheliʔčət.*

'We have always been ones who have manipulated (engineers of) the land, the trees, the plants and the water so we could live.'





# Science & Engineering: Natural Resources Pathway

If you're interested in protecting wildlife habitats and the environment while meeting the ever-growing demand for clean water, outdoor recreation, and scenic beauty, then studying natural resources management is right for you. Studying natural resources will prepare you for professional opportunities in environmental monitoring, such as endangered species and wetland delineation, restoration of disturbed land, and management of forested lands. Students may work for tribal, federal, state, and local land management, planning agencies or non-governmental organizations, and legislative bodies concerned with land use policies and laws.

## Puyallup Tribe Career Opportunities

- Chief Leschi Schools
  - Science Teacher
  - Grounds Crew
- Lands Use Office
- Shellfish Department
- Hunting & Wildlife Department
- Fisheries Department

## Post-High Education Opportunities

- Bachelors Degree in Natural Resources Conservation
- Masters of Science in Natural Resources
- Associate of Science in Natural Resources
- Organic Agriculture Certificate
- Minor in Wildlife Ecology



Natural Resources students get hands on experience at the Puyallup Tribe Salmon Hatchery and demonstration at the DIRU Hatchery.



# COURSES OFFERED AT CHIEF LESCHI SCHOOLS

Science & Engineering: Natural Resources Pathway					
CLUSTER	COURSE NAME	9th	10th	11th	12th
NATURAL RESOURCES	Biology: Ecology & Natural Resources	●			
	Chemistry: Natural Resources Conservation		●		
	Environmental Science			●	●
	Fisheries Management			●	●
	Natural Resources Management & Policy Internship				●

## Science & Engineering: Natural Resources Advisory Board

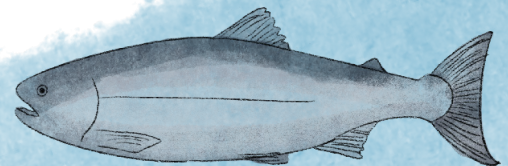
### Name

### Position

Annette Bryan	Puyallup Tribal Council
Jennifer Keating	Puyallup Tribal Planning Department, Citizens for a Healthy Bay
David Winfrey	Shellfish Biologist, Puyallup Tribe
Kalicia Bean	Puyallup Tribal Planning Department
Daniel Schwartz	Chemical Engineering Professor, University of Washington
Nancy Shippentower-Games	Director, Puyallup Tribal Shellfish Department
Phyllis McElroy	Communities for a Healthy Bay
Christopher Towe	Environment Educational Program, Pierce Conservation District
Nick Earl	Parent of current student, fisherman
Raeshawna Ware	City of Tacoma
John Bielka	Retired Fish Farmer
Blake Smith	Enhancement Director, Puyallup Fisheries
Julian Close	Fisheries Biologist, Puyallup Fisheries
Angela Dillon	SEPA Reviewer, Puyallup Fisheries
Malik Johnson	CLS Graduate & Point Defiance Fish Health

*huy huyil čet dx<sup>w</sup>ləhaydx<sup>w</sup> ʔə tiit huyalc ʔə tiit tul<sup>ʔ</sup>  
swatx<sup>w</sup>ix<sup>w</sup>tx<sup>w</sup>əd dəx<sup>w</sup>əshəliʔ.*

'We then become learners of how to manipulate (engineer) natural resources in order to live.'





# Education: Careers Pathway

The Education Careers Pathway is your opportunity to make a positive life long impact on others. This pathway will help develop your skills in teaching, planning, child development, and administration. This pathway can lead you to:

- Teaching & Training
- Professional Support Services
- Administration & Administrative Support

## Puyallup Tribe Career Opportunities

- Chief Leschi Schools
  - Teacher
  - Para
  - Counselor
  - Administrator
  - Coach
- Puyallup Tribal Health Authority
- Youth Center
- Children's Services
- Indian Welfare Children's Program
- Community & Family Services



Teaching Academy students engaging with elementary students during recess and class.

## Post-High Education Opportunities

- Para Educator Certification
- Apprenticeship Childcare Site Coordinator
- Early Childhood Associates
- Bachelors in Education
- Bachelors in Psychology
- Masters Degree in Social Work
- Masters in Educational Leadership
- Doctorate of Education





# COURSES OFFERED AT CHIEF LESCHI SCHOOLS

Education Careers					
CLUSTER	COURSE NAME	9th	10th	11th	12th
EDUCATION CAREERS	Child Development (S)	●	●	●	●
	Relationships & Human Development (S)	●	●	●	●
	Teaching Academy/Internship			●	●

## Education Careers Advisory Board

### Name

### Position

Amanda Figueroa  
Shandy Abrahamson  
Deonnah McCloud  
Kathryn Yates  
Curtis Patching  
Jessica Kinne

Senior Director, Student Transitions & Success, UW Tacoma  
Career Connected Learning Tribal Engagement Specialist, OSPI  
Director of Grandview Early Learning  
Elementary Principal  
Secondary Principal  
Education Careers CTE teacher

*dx<sup>w</sup>lehaydx<sup>w</sup> čet ʔə tili swatx<sup>w</sup>ix<sup>w</sup>tx<sup>w</sup>ed.*

'We are learners of this land.'





# Audio & Visual: Technology Pathway

In this field students will work with high-end equipment and cutting edge technology. Students will apply tactical artistic talent while learning visual arts principles and techniques applicable to creative design and entertainment fields. Creative students who see themselves designing, producing, exhibiting, performing, writing or publishing multimedia content will want to pursue courses in this pathway.

Students can participate in recording the history of Chief Leschi Schools through photography, yearbook, and video.



Audio & Visual students working on photography editing and filming a live interview in studio.

## Puyallup Tribe Career Opportunities

- Chief Leschi Schools
  - Fine Arts Teacher
  - Communications
  - Technology Department
- Emerald Queen Entertainment
- Media & Marketing
- Events Crew
- Puyallup Tribal Communications

## Post-High Education Opportunities

- Bachelors Degree in Fine Arts
- Associates of Applied Science Broadcast Video Productions
- Associates of Applied Science Digital Media
- Bachelors in Audio Visual Technology
- Masters Degree in Game Design





# COURSES OFFERED AT CHIEF LESCHI SCHOOLS

Audio & Visual Technology Pathway					
CLUSTER	COURSE NAME	9th	10th	11th	12th
AUDIO & VIDEO TECHNOLOGY	Graphic Design	●	●	●	●
	Video Production 1		●	●	●
	AV Production 2			●	●
	Digital Photography 1 & Yearbook			●	●
	AV Tech Internship			●	●

## Audio & Visual Technology Advisory Board

### Name

### Position

Michael Thompson

Communications Director, Puyallup Tribe

David Bonds

Director, Information Technology, Emerald Queen Casino

Sean Burke

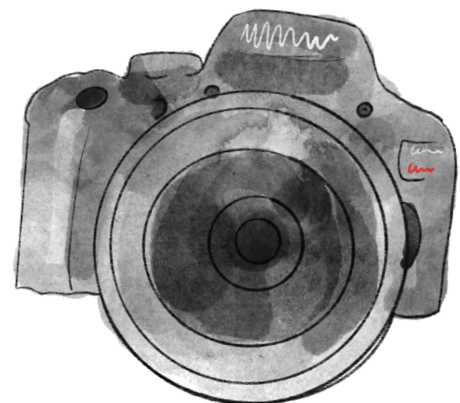
222 Pictures

Chris Hatchett

222 Pictures

*ck'aqid čet dx<sup>w</sup>slələ?ul'b.*

'We have always been historians.'





# Health Sciences: Medical Careers Pathway

Are you interested in science, helping others, or discovering new things? Students in the Health Science Pathway learn and practice skills that prepare them for diverse post-high school education and training opportunities from apprenticeships and two-year college programs to four-year college and graduate programs.

Healthcare is the largest and fastest-growing industry in the United States. In the Health Science: Medical Careers Pathway you can prepare for a career that promotes health, wellness and diagnosis, and treats injuries and diseases.



## Puyallup Tribe Career Opportunities

- Chief Leschi Schools Nurse
- Puyallup Tribal Health Authority CNA, LPN, RN, Dr., Dental Assistant, Dentist, Hygienist
- Children Services
- Salish Cancer Center
- Elder Services Wellness Center

## Post-High Education

- Licensed Practical Nurse (LPN)
- Medical Assistant (MA)
- Associates Pre-Nursing Degree
- Nursing Assistant
- Phlebotomy Certificate
- Associates in Applied Science Physical Therapy Assistant
- Masters of Science in Nursing
- Masters in Psychology
- Doctorate in Medicine





# COURSES OFFERED AT CHIEF LESCHI SCHOOLS

Health Sciences: Medical Careers					
CLUSTER	COURSE NAME	9th	10th	11th	12th
MEDICAL CAREERS	Intro to Medical Careers	●	●	●	●
	Medical Terminology		●	●	●
	Sports Medicine			●	●
	Sports Medicine 2				●
	Medical Careers Internship			●	●

## Health Sciences: Medical Careers Advisory Board

### Name

Corinne Bernardy  
Dr. Karen Wolf  
Dr. Kelsey Motanic  
Mitchell Ornelas  
Laramie Lunday  
Kayla Smith

### Position

Nurse, Puyallup Tribal Health Authority  
Head Veterinarian, Point Defiance Zoo and Aquarium  
Doctor, Puyallup Tribal Health Authority  
Puyallup Tribal Health Authority  
Puyallup Tribal Health Authority  
Health Sciences CTE teacher



*ck'aqid čet dx<sup>w</sup>t'eljix<sup>w</sup>alik<sup>w</sup>.*

'We have always been administers  
of herbal medicines for healing.'



## SOME OF THE CAREER DEVELOPMENT INITIATIVES by the Puyallup Tribe

As a component of economic diversification, the Puyallup Tribe has created additional career opportunities for Chief Leschi Students such as; Logistics, Manufacturing, Construction Trades, Graphic Design and Apparel Production, and other opportunities under development.

### Apparel Design and Production

- Graphic Design
- Marketing and Sales
- Merchandise Display
- Wholesale and Manufacturing

### Construction

- Civil Engineering
- Architecture
- Construction and Building Inspectors
- Carpenter
- Electrician
- Plumber



### Logistics

- Container Movement, Storage, and Maintenance
- Bulk Material Handling
- Heavy Equipment Fitting
- Pickup and Delivery Services

### Manufacturing

- Robotics
- Manufacturing Engineering
- Machine Operators
- Welding
- Machine Tool Setters



# PATHWAYS TO GRADUATION

## 3 Requirements for All Students to Graduate

### A. High School & Beyond Plan (HSBP)

Each graduating student must develop a HSBP, starting in 8th grade, and revise it through their high school years. The HSBP will illustrate how they intend to meet graduation requirements and what their plan is following high school.

### B. Earn 24 High School Credits

Each graduating student must meet the specific course requirements, including Personalized Pathway Requirement courses, as determined by Washington State.

### C. Complete One of the Following:

Students will need to demonstrate their readiness to enter a post-secondary career or college by completing one of the eight graduation pathways, in alignment with HSBP.

#### 1. Statewide Assessment Scores in ELA and/or Math

- Achieve cut scores on the SBA for ELA and/or math set by the School Board of Education (SBE)
- Qualifying IEP students achieve cut scores on Locally Determined Assessment (LDA) or Off-grade Test

#### 2. College Admission Exam Scores for ELA and/or Math

- Achieve cut scores on the SAT or ACT as set by the SBE

#### 3. High School Transition Courses in ELA and/or Math

- Bridge to College Class, passing both semesters



#### 4. Dual Credit Courses in ELA and/or Math completed with a passing grade

- Running Start Courses
- College in the High School
- Career & Technical Education

#### 5. Combination of Graduation Pathways for ELA and/or Math

- A student may combine pathways to meet the ELA and/or Math requirements as established in the outlined pathways 1-4

#### 6. Armed Services Vocational Aptitude Battery (ASVAB) Exam

- Students who meet the cut scores set by the SBE in the Armed Forces Qualification Test (AFQT) portion of the ASVAB

#### 7. Sequence of Career & Technical Education (CTE) Courses

- Passing a sequence of CTE classes in one career pathway that is in alignment with a students HSBP



# EARN HIGH SCHOOL *and* COLLEGE CREDIT

Many of our CTE courses give students the opportunity to earn college credit in addition to high school credit, at no cost to the student. If the course is completed with a C or better grade, students earn this credit which they can then transfer to the college of their choice.

<b>PATHWAY</b>	<b>COURSE</b>	<b>COLLEGE COURSE</b>	<b>PROVIDING INSTITUTION</b>
Culinary Arts	Culinary 1	Culinary Arts1	Bates Technical College
	Culinary 2	Culinary Arts 2	Bates Technical College
	Culinary 3	Culinary Arts 3	Bates Technical College
Natural Resources	Ecology & Natural Resources	Intro to Ecology	Clover Park Technical College
	Environmental Science	Orientation to Environmental Science	Clover Park Technical College
Education Careers	Relationships & Human Development/Child Development	Child Development	Pierce College
	Teaching Academy	Intro to Education	Central Washington University
Audio & Visual Technology	Graphic Design	Digital Imaging 1 - Adobe Photoshop	Clover Park Technical College
	AV Production 1	Intro to Video Production	Bates Technical College
	Digital Photography	Digital Photography	Clover Park Technical College
Medical Careers	Medical Careers	Business Communications	Clover Park Technical College
	Medical Terminology	Medical Terminology 1	Pierce College



# EQUIVALENCY CREDIT

Some CTE courses meet more than one of the state graduation requirements. Completing one course can check two boxes on the list. (Students still need to earn 24 credits however.) These are listed below:

COURSE	EQUIVALENCY
Sports Medicine	Health
Child Development	Health
Relationship & Human Development	Health
Ecology & Natural Resources	Lab Science
Natural Resources & Conservation	Lab Science
Environmental Science	Lab Science
Graphic Design	Fine Arts
Digital Photography	Fine Arts
Video Production 1 & 2	Fine Arts

Scan to learn more about our  
Career & Technical Education program!





# Warrior Pride

**CONNECTING**  
**classroom** to  
**culture** and  
**career**



**ck'aqid čət...**

"We have always been..."

Indigenous people have *always been* scientists, mathematicians, artists, architects, engineers, storytellers and so much more since time immemorial.

Our job at Chief Leschi is to ensure that every student has opportunities, is shown their true potential, and knows that their dreams are not only attainable, but are already theirs for the taking, because their ancestors and those before them *were*. The path before them has already been paved... the question is now, which one will they chose?

## Chief Leschi Schools

5625 52nd Street East  
Puyallup, WA 98371  
Phone: (253)445-6000  
[www.leschischools.org](http://www.leschischools.org)



siʔab læšxay' xalalʔtxw  
**Chief Leschi Schools**

*Preparing our students to walk  
successfully in "Two Worlds"*



Learning that works  
for Washington